

# **202 ANNUAL REPORT**

(205) 669-3846 - Office  
(205) 669-3886 - Fax

This report provides a summary and statistical analysis of the deaths that were investigated by the Shelby County Coroner's Office in the year 2021. We serve an increasing population of 223,024 and responsible for coverage of 800 square miles. Shelby County is the 7<sup>th</sup> largest county in Alabama. Our staff consists of a total staff of 5; 1 coroner and 4 deputy coroners.

The Coroner and/or Deputy Coroner are on duty 24 hours a day, 365 days a year. The Coroner's mission is to satisfy the legal requirements of the office in an expeditious manner. The primary task of the Coroner's Office is to determine the cause and manner of death of those who have died in Shelby County or in those whose traumatic event originated in Shelby County. An autopsy may be required depending upon the circumstances of the death.

The coroner and all appointed staff have authority through the Alabama Code, Section/Chapter 45-2-61.

The Coroner's Office investigates sudden, unexpected deaths, especially those that occur under violent or suspicious circumstances. Those deaths to be reported to the Shelby County Coroner's Office include all deaths occurring in Shelby County as outlined below regardless of where or when the initial injuring event occurred. In addition, all deaths as outlined below shall be reported that occurred outside of Shelby County but the initiating injuring event occurred in Shelby County.

- From disease which may be hazardous or contagious or which may constitute a threat to the health of the general public
- From external violence, an unexplained cause, or under suspicious circumstances
- Where no physician is in attendance, or where, though in attendance, the physician is unable to certify the cause of death
- From thermal, chemical, or radiation injury
- From criminal abortion
- While in the custody of law enforcement officials or while incarcerated in a public institution
- When the death was sudden and happened to a person who was in good health
- From an industrial accident or any death suspected to involved with the decedent's occupation
- When death occurs in a hospital less than 24 hours after admission to a hospital or after any invasive procedure
- Any death suspected to be due to alcohol intoxication or the result of exposure to drugs or toxic agents
- Any death due to neglect or suspected neglect
- Any stillbirth of 20 or more weeks gestational age unattended by a physician
- Any maternal death to include death of a pregnant woman regardless of the length of the pregnancy, and up to six weeks (or one year) post-delivery, even where the cause of death is unrelated to the pregnancy
- Any death of an infant or child where the medical history has not established a significant pre-existing condition

## **Staff**

Lina Evans	F-ABMDI	CORONER
Robert Ingram	D-ABMDI	CHIEF DEPUTY CORONER
Keith Berry		DEPUTY CORONER
Justin Roberts		DEPUTY CORONER
James Fuller		DEPUTY CORONER

## **General Statistics**

Number of Reported Cases 411

Coroner Cases / Manner of Death

Natural - 299

Accidental - 32                      Drug Overdose - 65

Suicide - 30

Homicide - 9

Pending - 2

Undetermined - 4

Total Autopsies - 55

Tox w/o Autopsy - 75

Unclaimed/Abandon - 5                      Unidentified Bodies - 0                      Exhumations - 0

Organ/Tissue Donation - 30                      Eye Donations - 20

## Gender of those deaths investigated in field

Males                      277

Females                      134

## Race of those deaths investigated in field

Caucasian                      341

Hispanic                      10

Black                      58

Other                      2

## Body Transport

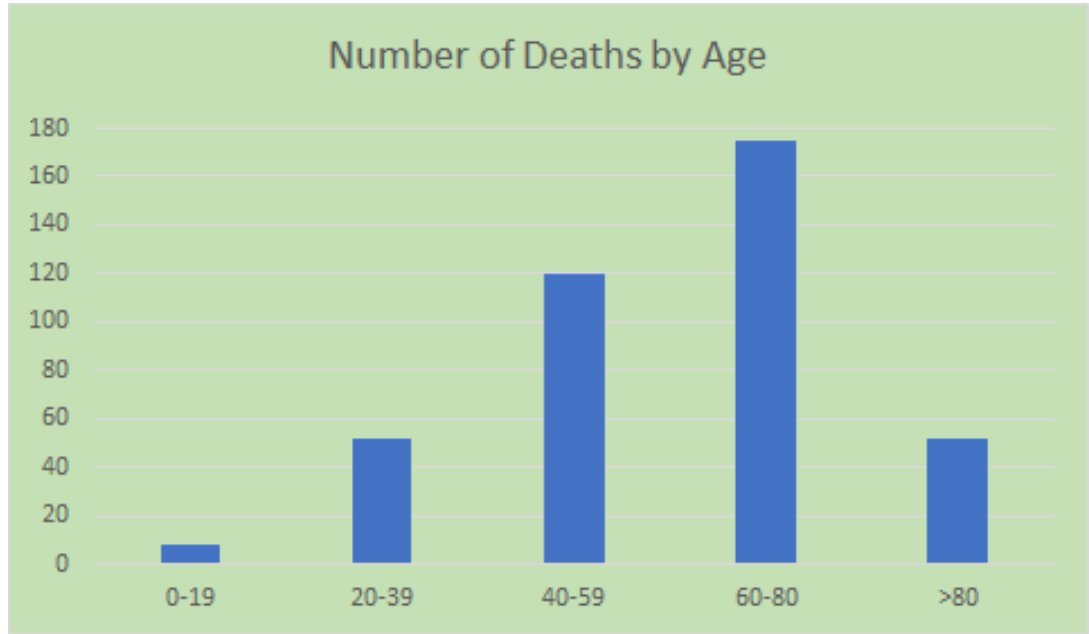
Coroner's Morgue                      190

Mortuaries - from scene                      195

## Out of county and cases transported to facility for postmortem examination

Jefferson County                      7

# Age



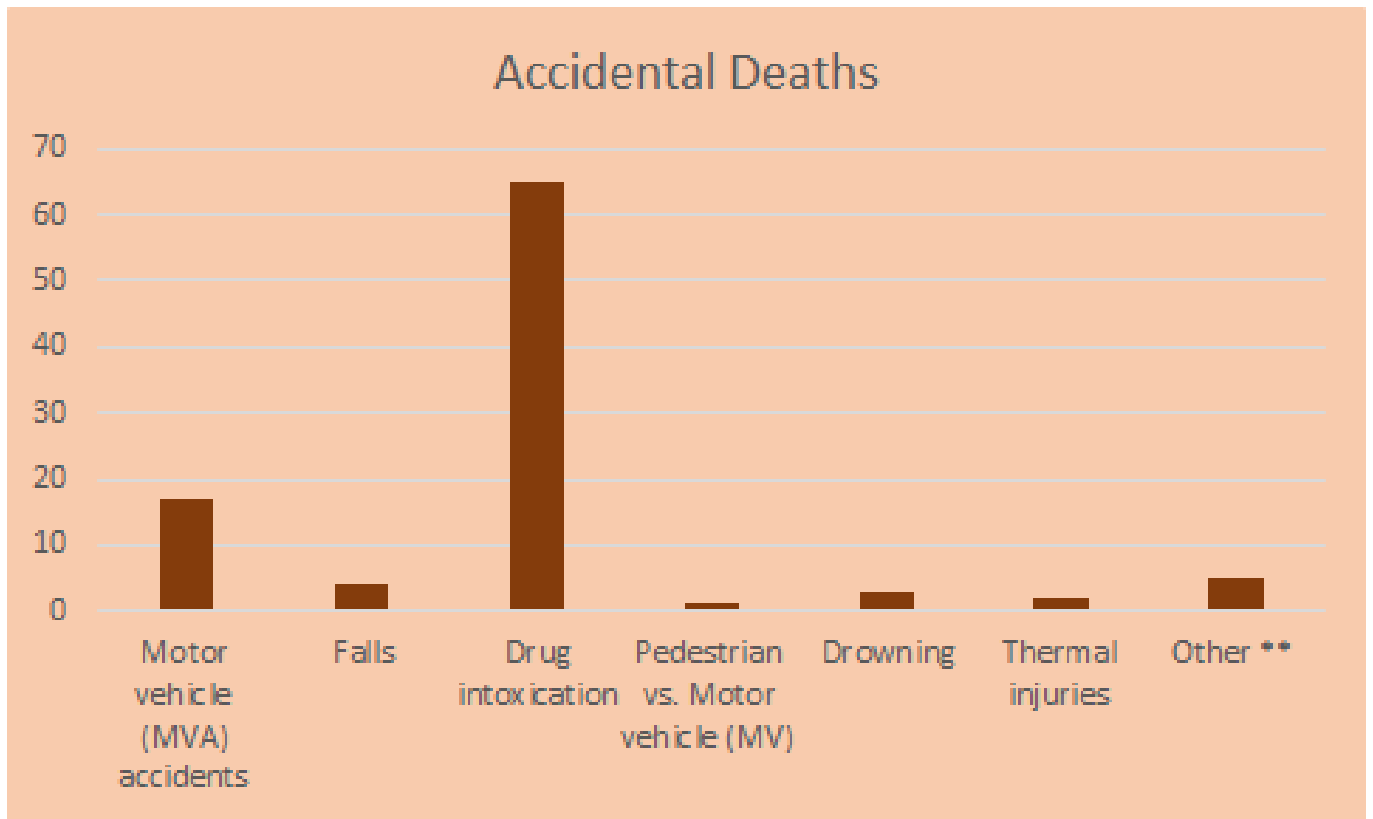
## Manner of Death

Manner	# of cases	#of full postmortems at AL DFS	# of partial exams at AL DFS	% receiving full postmortem exam**
Natural	299	13	0	4%
Accident	97	23	1	24%
Suicide	30	4	3	13%
Homicide	9	9	0	100%
Undetermined	4	4	0	100%

\*\* All field investigations receive external exam by SCCO

## Accidental Deaths

Type	Number of deaths
Motor vehicle (MVA) accidents	17
Falls	4
Drug intoxication	65
Pedestrian vs. Motor vehicle (MV)	1
Drowning	3
Thermal injuries	2
Other **	5



\*\*The other cases include: 2 strangulation on food; 2 Blunt force injuries; 1 GSW

Falls were of elderly individuals who fell from heights, which resulted in traumatic brain hemorrhage or severe fractures

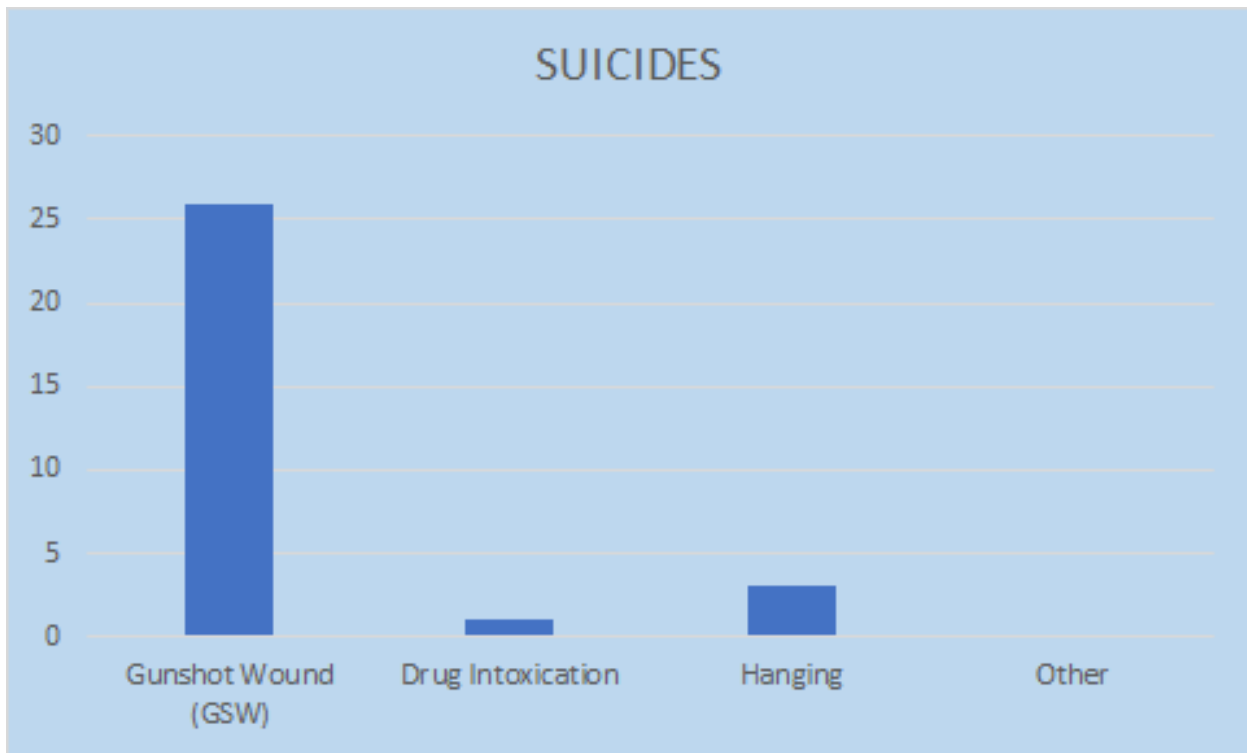
The 17 motor vehicle collision-related deaths displayed the following characteristics:

- Drivers – 15
- Passengers – 2
- Automobile victims wearing a seatbelt – 2
- Automobile victims not wearing a seatbelt – 15
- Alcohol and/or drugs involved in at least # of the deaths
  - Alcohol only in 6 deaths
  - Drugs only in 2 deaths
  - Alcohol and drugs in 4 deaths



## Suicides

Type	Number of deaths
Gunshot wounds (GSW)	26
Drug intoxications	1
Hanging	3
Other	3



The following are some features of the suicide deaths:

- 27 males and 3 females
- Males ages :
  - 0-19 3
  - 20-39 7
  - 40-59 10
  - 60-80 4
  - >80 2
- Females ages:
  - 0-19 0
  - 20-39 0
  - 40-59 1
  - 60-80 2
  - >80 0

## Homicides

The 9 homicides had the following characteristics:

- 7 males and 2 females
- Males ages :
 

0-19	1
20-39	3
40-59	3
60-80	0
- 1 blunt force /sharp wounds
- 8 deaths due to gunshot wounds

## Natural deaths

Of the natural deaths investigated:

Cardiovascular related 134  
 Deaths due to cardiovascular causes include MI's (heart attacks), heart arrhythmias, Congestive Heart Failure, HCVD.

Cerebrovascular related - 45  
 Deaths due to cerebrovascular causes include strokes, and other aneurysm related deaths.

Renal Failure/ESRD -8

Other Disease Related - 35

Infection/Sepsis - 3

Seizure Disorders - 2

Birth Defect Related - 0

Diabetes Related - 9

Chronic Alcohol Use Related - 7

Neoplasms/Cancer Related - 28

Pancreatitis/Pancreatic Cancer - 4

COPD/PE/Lung Related - 98

COVID -19 -19

Alzheimers/Dementia Related - 9

## **Undetermined**

The 4 undetermined deaths had the following characteristics:

- 3 were pediatric deaths all under 9 months old
- All deaths contributed to unsafe sleep environments
- 1 was an adult female

Other notes of interest:

There was an increase in cases across the board in the large Alabama counties. In Shelby County, most of the cases we saw increase were OVERDOSE RELATED DEATHS.